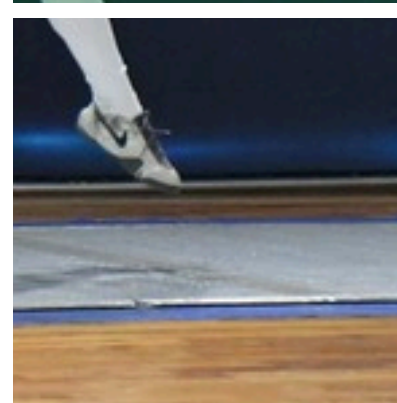
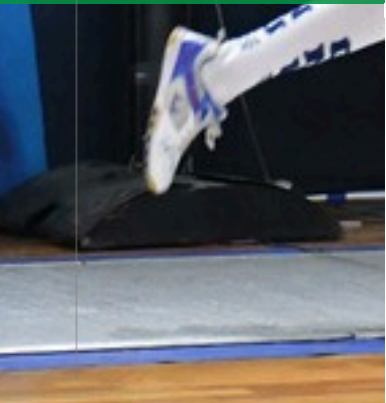
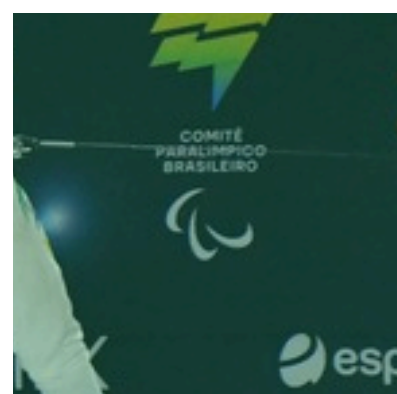
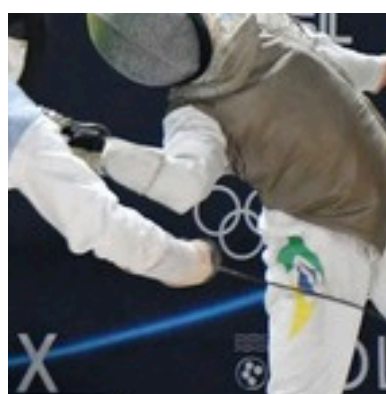
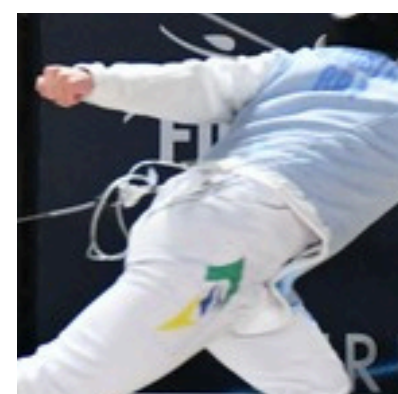
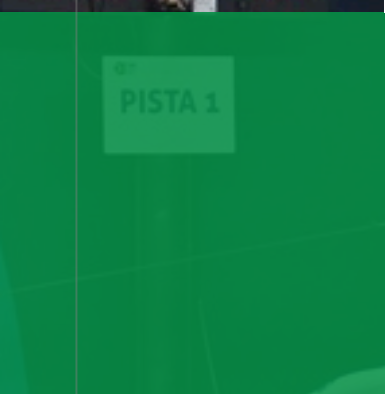
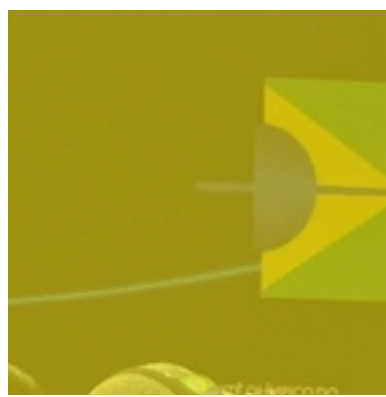
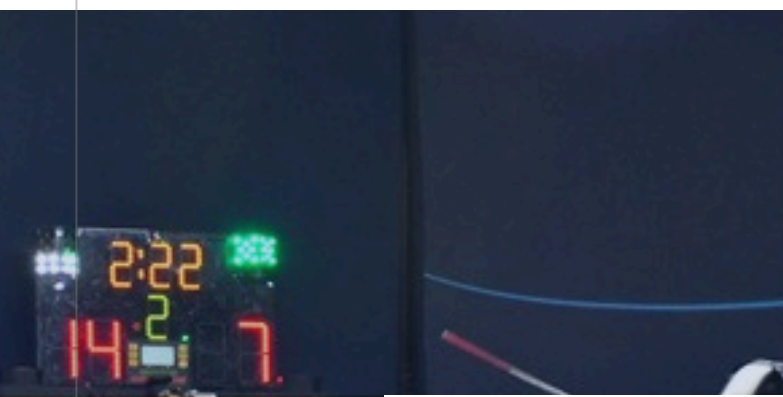


Annual Report 2025



President's Message

The year 2025 marked the beginning of a new cycle for the Brazilian Fencing Confederation, as well as the start of my tenure as President, following eight years serving as Vice President and Technical Director of the organization. Assuming this responsibility represents the continuity of work built collectively, but also the commitment to leading the Confederation to a new level of development, modernization, and national reach.

This first year was particularly significant due to the consistent progress observed across multiple fronts. Brazilian parafencing is experiencing its most solid phase, with structured growth, an expanded athlete base, and highly expressive international results. Likewise, the youth categories in conventional fencing demonstrated competitive maturity and a strong capacity for renewal, reaffirming the country's potential for upcoming Olympic cycles.

Another important milestone in 2025 was the advancement in preparations for hosting the 2026 Cadet and Junior World Fencing Championships in Rio de Janeiro. The organization of this event—one of the largest in the global fencing calendar—has required strategic, structural, and operational efforts, further consolidating international confidence in Brazil's ability to host major competitions.

In the field of communication and engagement with the fencing community, the Confederation significantly expanded its digital presence. Growth across social media platforms, the launch of the official Confederation app, and the inauguration of the CBEsgrima Store represent important steps toward bringing athletes, clubs, federations, and the public closer together, strengthening the sport's identity and modernizing our communication channels.

We also celebrated the territorial expansion of fencing in Brazil. In 2025, new states joined the national fencing map—Santa Catarina, Amapá, Pernambuco, and Ceará—broadening the Confederation's reach and reinforcing our commitment to democratizing the sport across all regions of the country.

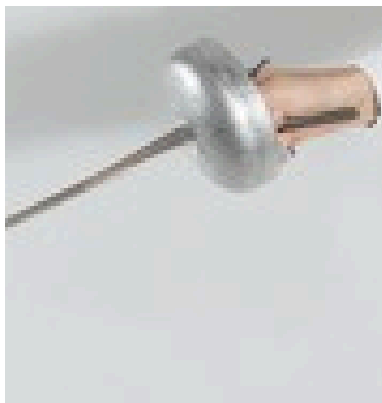
We conclude this first year of leadership with the conviction that we are building solid foundations for the future. Technical development, institutional growth, expansion of the athlete base, and modernization of communication demonstrate that Brazilian fencing continues on an upward trajectory. We will continue working with responsibility, transparency, and strategic vision to ensure that 2026 and the years ahead further consolidate this progress.

Arno Périllier Schneider

President of CBE



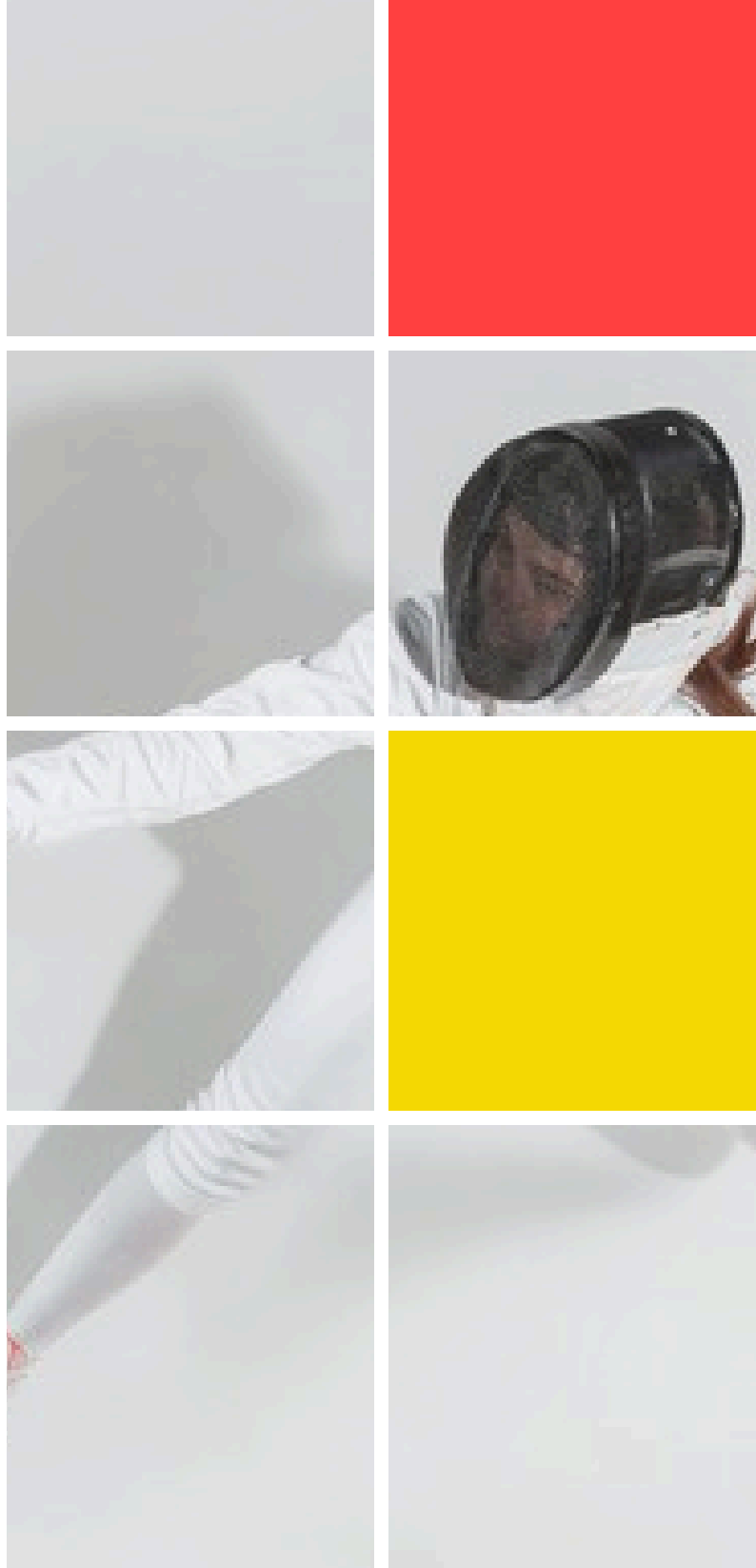
OUR PURPOSE
Inspire generations!
Awaken passion!
Fencing for everyone!



OUR MISSION
To promote and
represent Brazilian
fencing in an inclusive
way, through strategic
and innovative actions.

OUR VALUES

- Excellence
- Transparency
- Collaboration
- Sustainable Development
- Inclusion
- Ethics
- Compliance



Board of Directors

This institutional report consolidates the main activities, deliberations, and actions undertaken by the **Board of Directors of the Brazilian Fencing Confederation (CBE)** throughout the 2025 fiscal year.

The Board of Directors is the **collective body responsible for strategic leadership** and oversight of CBE's management. Comprising **ten (10) board members**, it operates in shared responsibility with the Presidency in adopting best governance practices and is tasked with ensuring the mechanisms necessary for the organization's institutional compliance.

In 2025, in accordance with the CBE Bylaws, **General Elections** were held, resulting in the formation of a new leadership group, with the continuity of some members from the previous administration. The Board is composed of representatives from the **Confederation, State Federations, Athletes, and Independent Members**—the latter not directly linked to the sport, but essential for broadening perspectives and strengthening governance.

During the first quarter, and on a recurring basis throughout the year, the Board deliberated on the affiliation and recognition of new **Sporting Practice Entities (EPDs)** and **Para-sport Entities (EPPs)**, contributing to the expansion of both fencing and parafencing nationwide. These processes were conducted through document analysis, validation by State Federations, and verification of **technical and institutional compliance**. The members of the **Temporary Electoral Commission** were also appointed, responsible for ensuring the integrity of the electoral process, including the validation of candidacies, **voter eligibility, proportional voting by category, vote counting, and certification of results**.

Among the key **governance initiatives**, the implementation of a **Rotating Chair model** for the Board stands out, with a two-year term, promoting **leadership rotation** and institutional balance. **Integrity practices** were also reinforced, including the declaration of conflicts of interest and qualified participation in deliberations.

The Board monitored the execution of CBE's **Strategic Plan**, structured around the pillars of **Management, Governance, Education, Inclusion, and Athletic Performance**. Progress was identified in areas such as training and inclusion initiatives, as well as challenges related to the measurement of **Key Performance Indicators (KPIs)**, program execution, and the consolidation of reports.

Board of Directors

En conjunction with the **Fiscal Council**, the Board of Directors analyzed the Entity's **financial situation**, identifying minor operating deficits and weaknesses in **internal controls**. In response, corrective measures were proposed, including **expense reductions**, **project reprioritization**, the **implementation of area-based budgeting**, as well as improvements in cash flow management and financial reporting. These actions aim to ensure financial sustainability and greater efficiency in resource allocation.

Within the scope of **Institutional Communication**, strategies were discussed to increase the **visibility of fencing**, including strengthening **digital presence** and engaging with influencers, with the objective of connecting with athletes, audiences, and partners, while further consolidating CBE's **institutional brand**.

The Board also identified the need to update the **Bylaws and Internal Regulations**, focusing on improving governance, increasing athlete representation, and modernizing **electoral processes**. These revisions are considered strategic for **institutional maturity**.

Among the main challenges identified by the Board are: the **consolidation of performance indicators**, the **expansion of fundraising** efforts, the **improvement of international sporting performance**, and the **strengthening of transparency and compliance**.

All meetings were held in a **virtual environment**, ensuring sustainability, regularity, quorum, and active participation of board members, with formal records documented in minutes.

The Board of Directors played a fundamentally strategic role throughout 2025, contributing to the **institutional strengthening** of CBE. The actions undertaken demonstrate **progress in governance**, albeit accompanied by challenges that require continuity, management discipline, and an ongoing commitment to excellence.



Fiscal Council



The **Fiscal Council** is the **independent oversight body** of the Brazilian Fencing Confederation (CBE), responsible for ensuring **transparency, compliance, and financial control** of the Entity. Its duties include reviewing the financial statements, such as the Balance Sheet, Income Statement (P&L), Cash Flow Statement, and other accounting and administrative records.

In 2025, the Fiscal Council was composed of **Flavia de Almeida Foschini Queiroz, Paulo José Iasz de Moraes, and Jean Campello Brunswick (Chair)**.

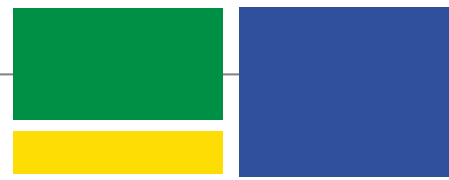
As occurs annually, one of the Council's first responsibilities was the review of the **prior fiscal year's accounts** (2024). In a regular meeting held in the first quarter, based on accounting documentation and the opinion of an independent external auditor, the Council **approved the accounts**, albeit with points of attention, such as an operating deficit and a reduction in available cash. Measures were recommended to **restore financial balance**, strengthen sustainability, and ensure continuous monitoring of internal resources.

Within the scope of the 2025 reviews:

- **Meeting of May 9, 2025:** Financial statements from January to March were analyzed, including access to internal systems and cost center management. The accounts for the period were approved without reservations.
- **Meeting of July 22, 2025:** Documentary non-compliance was identified in a procurement process for awards, due to the absence of a clearance certificate. The Council recommended stricter technical and procedural standards for future contracting. The quarter's accounts were approved with reservations.
- **Meeting of October 28, 2025:** Recurring financial reimbursements related to lost travel documents were recorded. The Council expressed concern regarding recurrence and recommended administrative accountability, indemnification measures where applicable, and stricter controls to prevent future occurrences. The review of the final quarter will continue into the 2026 fiscal year.

Throughout 2025, the Fiscal Council identified **points of attention** related to financial **sustainability**, process compliance, and expense control, requiring continuous monitoring and structural actions by management.

Through its Fiscal Council, CBE reaffirms its commitment to transparency, accountability, and **best governance practices**—essential pillars for institutional strengthening and the sustainable development of the sport.



Management, Ethics, and Transparency Program (GET)

The **Management, Ethics, and Transparency Program (GET)** is an initiative of the **Brazilian Olympic Committee (COB)** aimed at strengthening **governance, integrity,** and the **professionalization** of national sports organizations. The program represents a milestone in the modernization of sports management by establishing **objective parameters for evaluation, monitoring, and institutional development** within the National Sports System.

The growing demand for **transparency, efficiency in the allocation of resources,** and **compliance** with legal and ethical standards has driven the creation of structured **governance mechanisms in sport,** with GET standing as one of the leading references in this field.

Among its primary objectives are:

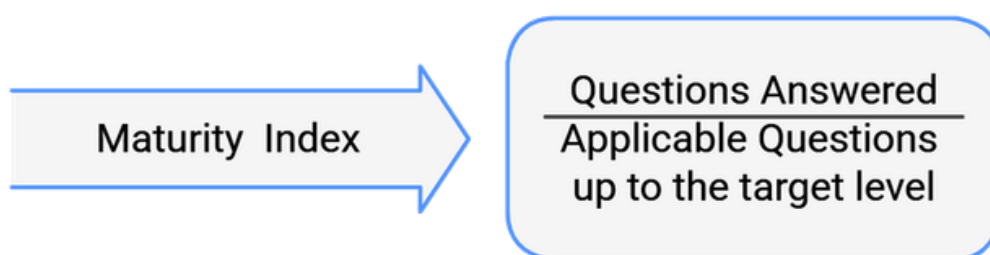
- promoting excellence in the management of sports organizations;
- establishing minimum standards for institutional governance;
- encouraging integrity and compliance policies;
- assessing organizational maturity levels;
- fostering continuous improvement of administrative processes;
- linking institutional performance to the allocation of financial resources.

The **Brazilian Fencing Confederation (CBE)** was one of the first organizations affiliated with COB to join the GET program, as early as 2017, initiating an ongoing process of development and enhancement of its management practices.

The assessment for the **2025** fiscal year took place between March and September. The evaluation framework covered **nine Areas of Knowledge,** broken down into 35 topics and **336 questions,** distributed across **five levels of maturity.** Confederations were grouped into **six categories** according to their financial revenue in the previous fiscal year.

In 2025, CBE advanced from **Maturity Level 2 to Level 3,** demonstrating **institutional progress** and requiring compliance with more complex and demanding criteria.

The Maturity Index reflects the Confederation's **progress** by area of knowledge and by topic. It is calculated as the ratio between the number of requirements met and the total number of applicable requirements for the target level.



Administrative



The year 2025 marked the beginning of a new Olympic cycle for the Brazilian Fencing Confederation (CBE), a period that guides strategic planning and the consolidation of governance practices, in alignment with the parameters established by the Brazilian Olympic Committee's (COB) Management, Ethics, and Transparency Program (GET).

Governance Transition

In the first quarter, CBE underwent a significant institutional transition with the election of a new Presidency and the reconstitution of its governing bodies. The electoral process was conducted fully in accordance with the Bylaws, including the publication of a formal notice, the use of a specialized electronic voting provider, and final ratification by the General Assembly, reinforcing principles of transparency and integrity.

Organizational Diagnosis and Administrative Modernization

The new administration initiated a process of administrative modernization, aligned with the Governance, Strategy, and Support Processes areas of GET. To this end, a specialized consultancy was engaged to conduct a comprehensive assessment of the organizational structure, team competencies, and internal workflows.

The study identified a high level of employee satisfaction and engagement, while also highlighting areas of concern, such as the lack of a systemic perspective and fragmentation across departments. These findings guided the review of processes, the strengthening of internal communication, and the reorganization of responsibilities.

Management Model Restructuring

The diagnosis revealed that the existing horizontal management model led to priority conflicts, duplication of authority, and operational overload. In response, CBE adopted a hierarchical management model, with clear definition of roles, decision-making levels, and reporting lines. This shift directly contributed to the enhancement of internal controls, risk management, and administrative efficiency.

A new organizational structure was implemented, organized into four main areas: Presidency, Sports Directorate, Administrative and Financial Directorate, and Communication and Marketing Directorate. This reorganization strengthened institutional integration and expanded the organization's capacity to execute its strategic plan.

People Management and Partnerships

In alignment with Human Resources guidelines, CBE established a partnership with Banco Santander to implement an internship program, including a structured selection process and benefits for participants. The intern, Eloá Poleze, was selected following both technical and behavioral evaluations.





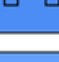

GET Program Overview of Results

Indicator	2024	2025
Governance	86%	92%
Estrategy	86%	92%
Transparency	100%	100%
Support Processes	66%	74%
Compliance	46%	45%
Sports Management	52%	75%
Communication and Marketing	33%	80%
Woman in Sport	25%	38%
Education and Security	47%	63%

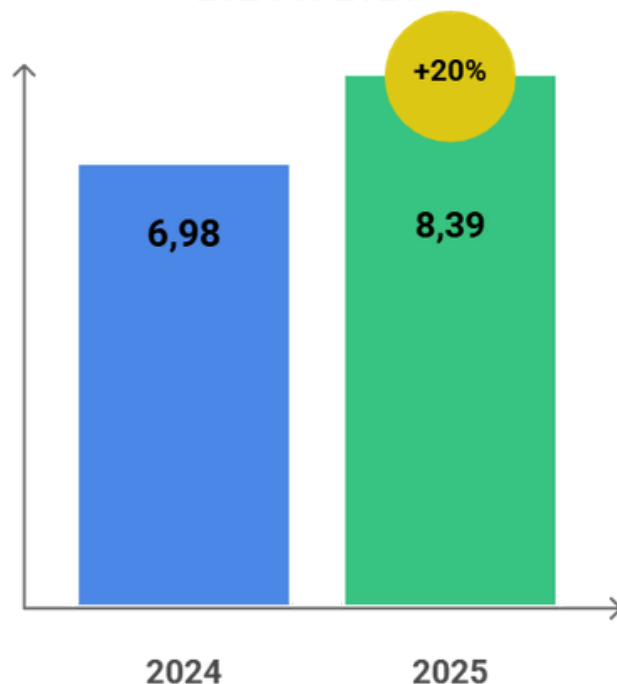
Improving performance in the Management, Ethics, and Transparency Program (GET) is one of the specific objectives of the Strategic Plan of the Brazilian Fencing Confederation (CBE).

In 2025, CBE achieved the target established for the fiscal year, approaching the index projected for 2028, which demonstrates consistent progress in its organizational maturity.

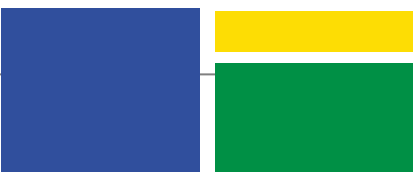
The results highlight CBE's continuous advancement within the GET Program, both in the overall index and in performance by topic. It is important to note that GET serves as a structured governance indicator, integrated into the Confederation's Strategic Plan and used as a reference for monitoring institutional maturity.

CONFEDERATION FRAMEWORK	2024	2025
 Category	2	3
 Questions (target levels)	281	243
 Questions answered (target levels)	190	193
 Questions (all levels)	336	336
 Questions answered (target levels)	198	222
 Evidence submitted (all levels)	380	235

Evolution of the GET CBE Index
2024 to 2025



Infrastructure and Administrative Headquarters



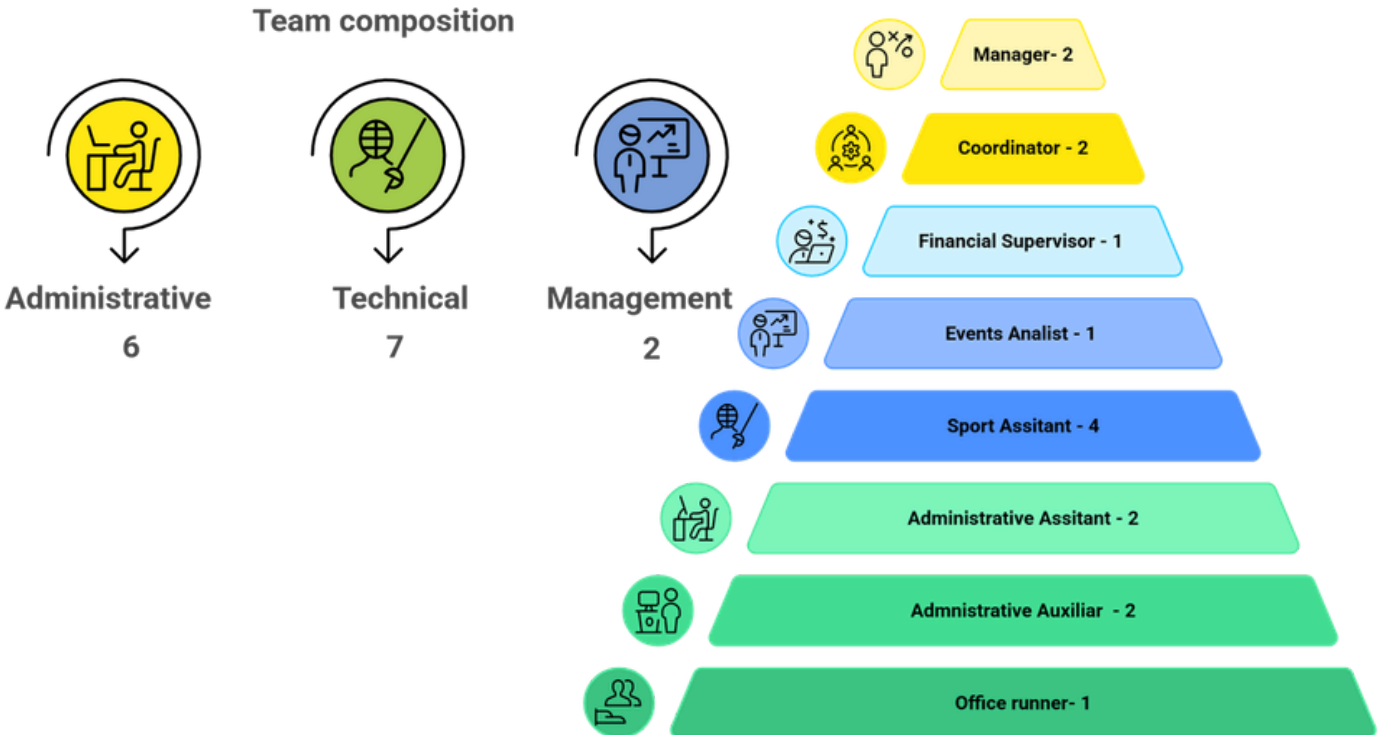
The Confederation relocated to a new headquarters, featuring expanded space and improved layout, enhancing internal organization and the execution of both administrative and sporting activities. The facility also served as the operational base for the organizing committee responsible for the 2026 Cadet and Junior World Championships.

Fundraising and Financial Adjustments

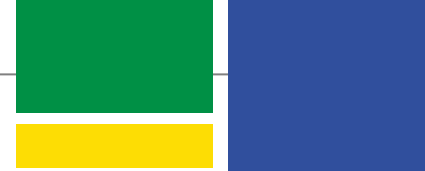
Projects submitted under the Sports Incentive Law did not reach the minimum fundraising targets, requiring the use of internal resources and the renegotiation of supplier agreements. Despite these challenges, CBE maintained all its obligations up to date, reinforcing its commitment to financial responsibility—an essential indicator within the Budgeting, Treasury, and Accounting areas.

Period Summary

The year 2025 represented a phase of institutional reorganization and strengthened governance. The actions implemented contributed to CBE’s advancement within the GET Program, particularly in the areas of Governance, Support Processes, Communication, and Sports Management. Administrative modernization, the adoption of a hierarchical management model, and organizational restructuring established solid foundations for the Confederation’s development in the new Olympic cycle.



Financial



The Brazilian Fencing Confederation began the 2025 fiscal year with an approved ordinary budget of R\$ 10,265,616.96, composed of funds decentralized by the Brazilian Olympic Committee (COB), the Brazilian Paralympic Committee (CPB), and projected own-source revenues, including membership fees, competition entry fees, annual dues, and sponsorships.







2026 Funding

Throughout the fiscal year, additional funds were incorporated for special projects, including:

- development of youth categories (ages 14 to 20);
- promotion of women in sport;
- competition support funds;
- grassroots and development programs;
- high-performance Olympic and Paralympic preparation.

Combined with ordinary and own-source revenues, total available funding in 2025 reached R\$ 15,146,671.72.


COB – Total: R\$ 8.091.127,23

Category	Value
 Ordinary Funds	R\$ 5.340.972,57
 Prior Balances	R\$ 346.170,66
 Extraordinary Funds	R\$ 344.000,00
 Development	R\$ 443.928,00
 World Championships	R\$ 1.500.000,00
 Olympic Preparation (FIE Competitions)	R\$ 116.056,00

CPB – Total: R\$ 5.730.848,81

Category	Value
 Ordinary Funds	R\$ 2.943.281,25
 Prior Balances	R\$ 223.567,56
 Development Funds	R\$ 648.000,00
 Human Resources	R\$ 336.000,00
 Fencing Projects– Caixa	R\$ 700.000,00
 Equipment Funds	R\$ 880.000,00

Own Resources - R\$ 1.324.695,68

Type of revenue	Value (R\$)
 Monthly Fees	149.820,30
 Competition registrations	724.746,25
 Annual fees	177.141,41
 Sponsorships	272.987,72



COB
51%



CPB
36%



OWN RESOURCES
9%

Financial

Budget Allocation Methodology

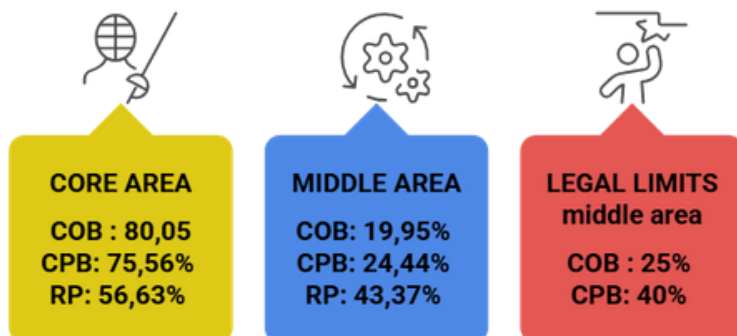
Resource allocation followed the strategic objectives defined in the CBE Plan V2025.11.25, which guides project selection and categorization, ensuring alignment between planning, execution, and institutional goals.

CBE adopts an investment prioritization model based on weighted strategic objectives and the relevance of associated actions. This methodology is applied to both ordinary resources and those derived from agreements and decentralized funding, even though they are managed through different systems by COB and CPB.

It is important to note that the total available funding does not fully correspond to the amount executed, due to the characteristics of projects financed under Law No. 13,756/2018. As projects are completed, remaining balances are returned to the proponents and may or may not be reused. In 2025, this adjustment represented approximately 15% of total resources.

General Expenditure Framework 2025 - R\$

Expense	COB	CPB	OWN RESOURCES	TOTAL	%
Development Programs and Projects	306.445,88	942.729,65	138.430,70	1.387.606,23	10%
Entity Maintenance	1.521.692,79	993.920,60	278.715,97	2.794.329,36	21%
Human Resources Training	51.602,08	0,00	59.743,78	111.345,86	1%
Technical Preparation	1.621.855,58	483.475,60	225.198,27	2.330.529,45	18%
Athlete Maintenance	190.248,00	227.884,64	0,00	418.132,64	3%
Sports Competitions	4.197.458,48	1.419.497,39	622.606,97	6.239.562,84	47%
TOTAL EXECUTED	7.889.302,81	4.067.507,88	1.324.695,68	13.281.506,37	100%







CBE exceeded its 2025 targets for the allocation of expenditures between core (programmatic) and administrative areas.

The organization continues to direct the majority of its resources toward its core activities—well above legal requirements and internal benchmarks.

Financial

The organization and participation in national and international competitions accounted for 47% of total expenditures in 2025.

Application of Resources in Competitions

Application of the Resource	COB	CPB	TOTAL
 National Organization	1.510.670,94	508.827,06	R\$ 2.019.498,00
 International Organization	1.964.104,50	433.546,07	R\$ 2.397.650,57
 National Participation	185.882,57	433.725,99	R\$ 619.608,56
 International Participation	722.683,04	477.122,66	R\$ 1.199.805,70
TOTAL	4.197.458,48	1.853.221,78	6.236.562,83

A total of R\$ 1,387,606.23 (one million, three hundred and eighty-seven thousand, six hundred and six reais and twenty-three cents) was allocated to the acquisition of equipment. Part of this amount corresponds to the purchase of fencing pistes and apparatus for the 2026 Cadet and Junior World Championships. These assets will remain as a legacy for Brazilian fencing and will be used to enhance competitions and support the establishment of new fencing venues across the country.

The 2025 fiscal year demonstrates responsible budget execution, aligned with the principles of legality, transparency, and efficiency. The majority of resources were directed toward sports development, infrastructure, participation in competitions, and direct support to athletes, in accordance with CBE's strategic objectives and the guidelines of the Brazilian Olympic Committee (COB) and the Brazilian Paralympic Committee (CPB).

Significant challenges remain, including reliance on public funding and limitations in generating own-source revenues. The partial execution of certain funds—characteristic of projects financed through lottery-based mechanisms—highlights the need to strengthen revenue diversification strategies and optimize budget execution, with the aim of achieving greater financial sustainability and institutional autonomy.



Communication and Marketing

The year 2025 consolidated Communication and Marketing within the Brazilian Fencing Confederation (CBE) as strategic pillars for institutional strengthening, increased visibility of the sport, and engagement with athletes, clubs, federations, and the general public. Building on the progress achieved in 2024, we expanded our digital presence, modernized our communication channels, and broadened our involvement in major events within the national sports landscape.

Digital Transformation: CBE Fencing App and CBESgrima Store

In 2025, CBE achieved two unprecedented milestones in its history: The launch of the CBE Fencing App, the first official platform for the sport in Brazil, integrating calendar, rankings, news, live streaming, results, and services for athletes. This initiative reinforces our commitment to transparency, agility, and closer engagement with the fencing community.



The inauguration of the CBESgrima Store, the Confederation's official online store, providing access to licensed products, strengthening the sport's visual identity, and creating new opportunities for revenue generation and brand visibility.



www.cbesgrimastore.com.br



These initiatives consolidate the modernization process initiated in 2024, when the CBE website was fully redesigned to provide greater modernity and improved usability for the fencing community.







Communication and Marketing

Social Media: Growth, Reach, and Engagement

CBE's digital platforms experienced significant growth in 2025, expanding the reach of fencing and strengthening the Confederation's presence in the digital environment.

The primary digital communication channels for CBE are Instagram, followed by Facebook and YouTube, which collectively reach the majority of the fencing community.

Followers by Platform






Platform	2024	2025
 Instagram	14.364	17.204
 Facebook	8.482	8.772
 YouTube	3.638	4.540
 TikTok	6.287	6.900
 Total	32.771	37.416

+14%

The work of the new press office also intensified coverage of national competitions, bringing institutional communication closer to athletes, clubs, and the fencing community. This more active presence at events enabled greater agility in content production and in the dissemination of results, stories, and behind-the-scenes aspects of the sport.

As a result of these efforts, 245 journalistic articles were produced in 2025, serving as a foundation for sports media coverage. In the digital environment, the impact was equally significant: CBE's social media channels recorded 3,324 posts, expanding the sport's reach and fostering higher levels of audience engagement..

Views by Platform

Platform	2024	2025
 Instagram	3.200.000	7.781.192
 Facebook	1.109.080	569.754
 YouTube	107.735	107.647
 TikTok	127.000	72.451
 Total	4.543.815	8.531.044

+ 88%

Press Office and Communications

In 2025, the Brazilian Fencing Confederation underwent a significant modernization of its communication strategy, replacing its previous press office with OTD, a firm specialized in Olympic sports. This transition substantially increased CBE's presence in the sports media landscape, strengthening relationships with journalists, specialized outlets, and key opinion leaders in the sector.

Institutional Events

COB Expo and Brazil Paralympic Expo

In 2025, the Brazilian Fencing Confederation once again participated in the COB Expo and the Brazil Paralympic Expo, two of the country's leading events dedicated to the promotion and integration of Olympic and Paralympic sports. CBE's presence at these events reinforced its institutional role, increased the visibility of the sport, and strengthened relationships with diverse audiences and strategic partners.

Participation in these events enabled meaningful engagement with representatives of other sports organizations, managers, industry professionals, and potential supporters. It also provided direct interaction with visitors, offering an opportunity to introduce fencing to individuals who, in many cases, had no prior exposure to the sport.

During CBE's activations, visitors were able to experience the electronic plastron—equipment used to measure agility and reaction time—which generated strong engagement and sparked interest in practicing fencing. The initiative was complemented by the distribution of institutional promotional items, enhancing the visitor experience and supporting the promotion of the CBE brand.

Participation in these exhibitions underscores the importance of initiatives that expand awareness of fencing, strengthen its presence within the national sports landscape, and contribute to the growth of the sport across different regions of the country.



CBE Hall of Fame



Established in 2019, the Brazilian Fencing Confederation **Hall of Fame** aims to celebrate and recognize individuals who have made significant contributions to the development and growth of fencing in Brazil. The initiative also plays a vital role in preserving the sport's history, honoring trajectories that have shaped different generations and helped consolidate the discipline nationwide.

In 2025, CBE honored **Master Daniel Levavasseur**, a renowned French coach who led Brazilian athlete Nathalie Moellhausen to the World Championship title in épée in Budapest. His induction into the Hall of Fame symbolizes the Confederation's recognition of those who, even beyond national borders, have made decisive contributions to the technical and competitive advancement of Brazilian fencing.

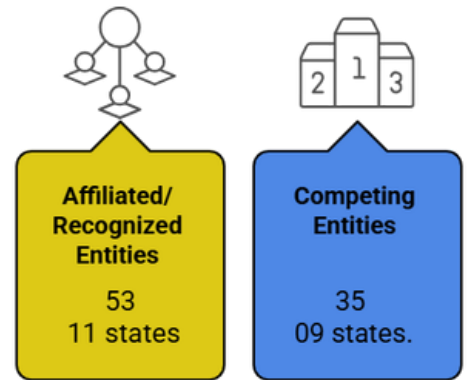
With each edition, the Hall of Fame reaffirms its role as a space for celebration, memory, and inspiration, paving the way for future inductions—including posthumous recognitions—of all those who have helped shape the history of fencing in Brazil.



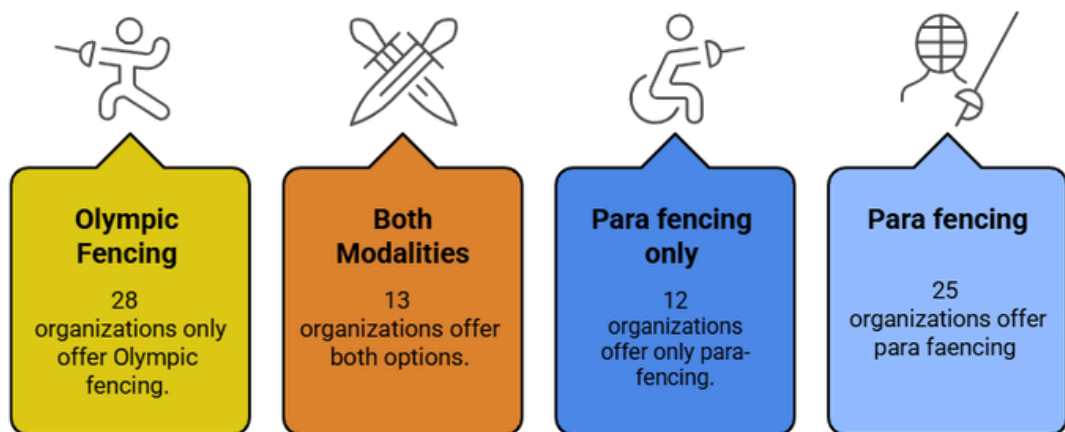
EPDs, EPPs and Athletes

The consolidated data for 2025 demonstrate a cycle of consistent expansion in Brazilian fencing, both in the number of entities and in the volume and diversity of participating athletes.

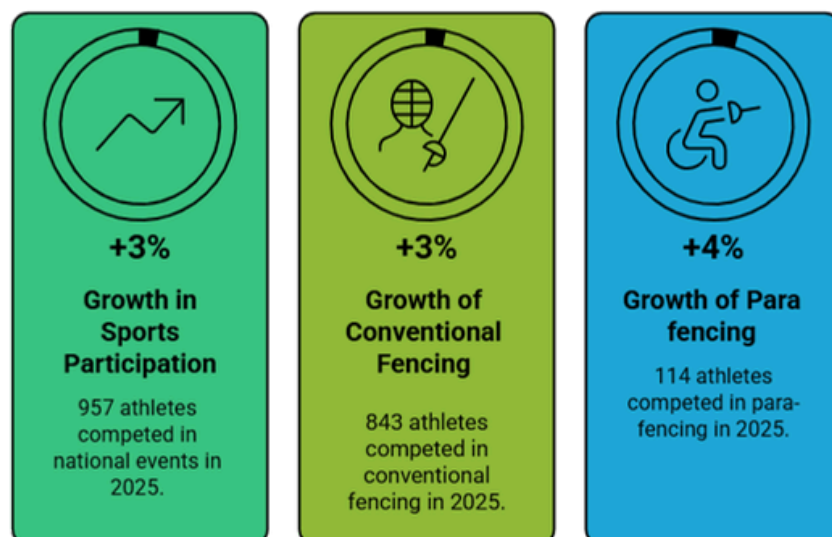
The increase to 53 affiliated or recognized entities, distributed across 11 states, reflects the sport's growing reach nationwide. Of these, 35 actively participated in official competitions, representing nine states and reinforcing the strength and vitality of the competitive calendar.



The expansion in the range of disciplines offered also stands out: 28 entities operated exclusively in Olympic fencing, 12 in para-fencing, and 13 offered both, totaling 25 institutions with para-fencing activities. This scenario confirms the advancement of sports inclusion and the strengthening of the para-sport structure in the country.



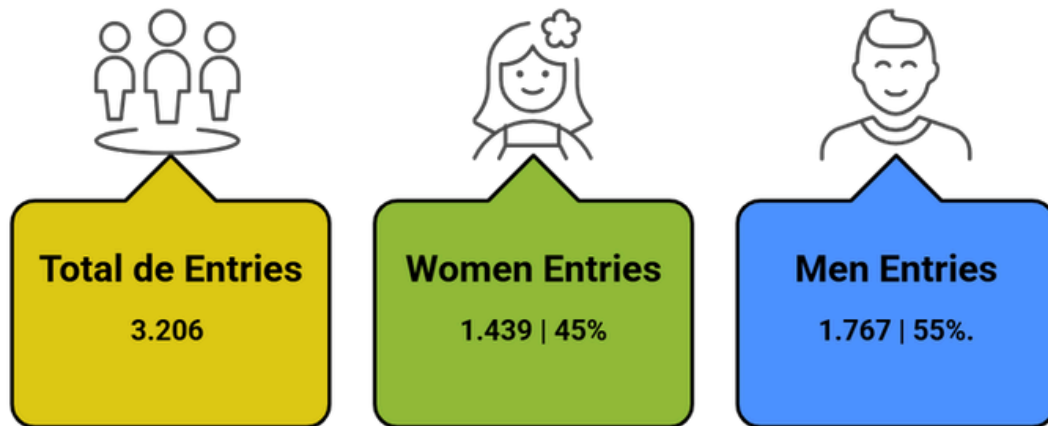
In terms of sports participation, 957 athletes competed in national events in 2025, representing a 3% increase compared to the previous year. Conventional fencing accounted for 843 athletes (+3%), while para-fencing registered 114 participants, reflecting a 4% increase and consolidating its expansion trajectory.



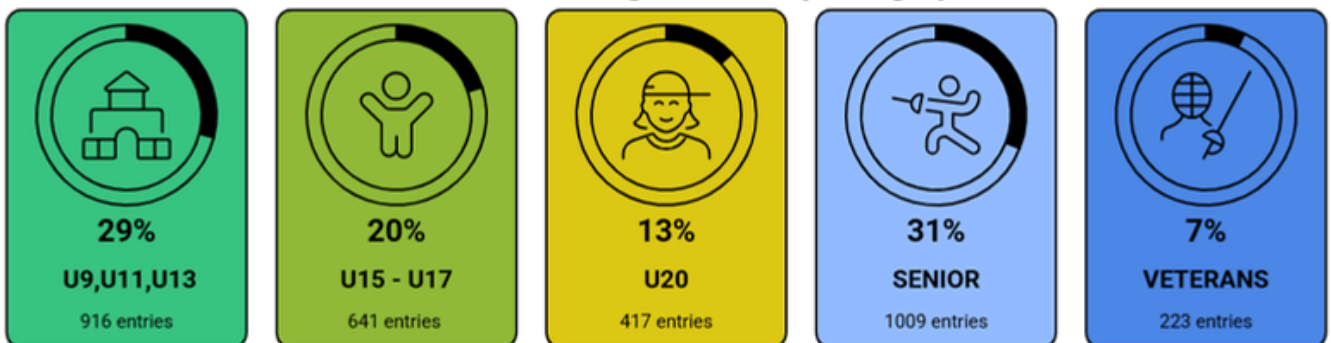
EPDs, EPPs and Athletes

In 2025, CBE organized 14 national events, totaling 3,206 entries across 171 competitions in different weapons and categories. In addition, Brazil hosted three international events: the Parafencing World Cup and the Foil Satellite Tournament in São Paulo, as well as the Senior Pan American Championships in Rio de Janeiro.

Entries in National Competitions – Fencing

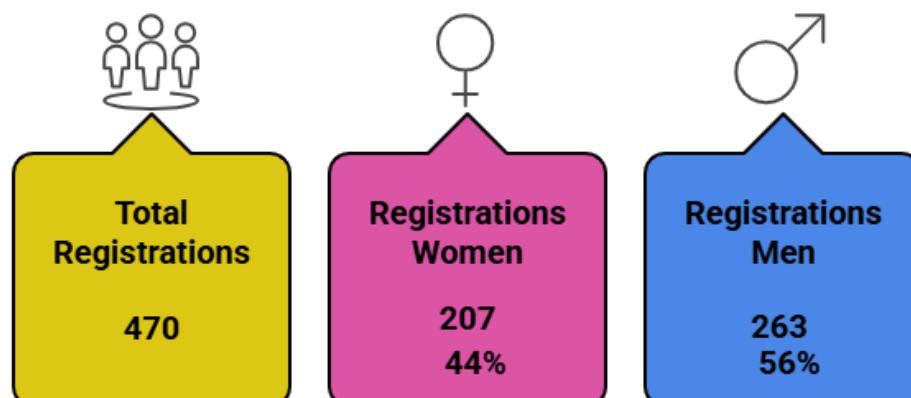


Distribution of Registrations by Category



The national para fencing circuit recorded its highest number of participants for the fourth consecutive year, with the Brazilian Championships standing out by bringing together 79 athletes, increasing female representation, expanding the number of EPDs, and welcoming new states into the competition.

Registrations Para Fencing



EPDs, EPPs and Athletes

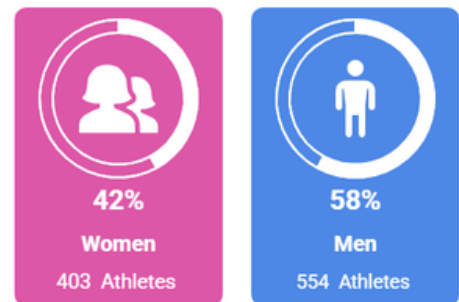
The youth categories also showed relevant dynamics. Segments such as Cadet (+21%) and Veteran (+17%) recorded the highest proportional growth, demonstrating both the renewal of the competitive base and the continued participation of experienced athletes in the sporting environment. Meanwhile, categories such as U11, U13, and Junior experienced small negative fluctuations, which fall within the normal variation expected in development cycles.

Gender-based analysis reveals important progress. In conventional fencing, women represented 42% of the total—an increase of 5% compared to 2024—while men accounted for 58%. In para-fencing, female participation showed even more significant growth: women accounted for 41% of athletes, representing a 7% increase over the previous year. These indicators reinforce the impact of initiatives aimed at encouraging female participation and strengthening representation in the sport.

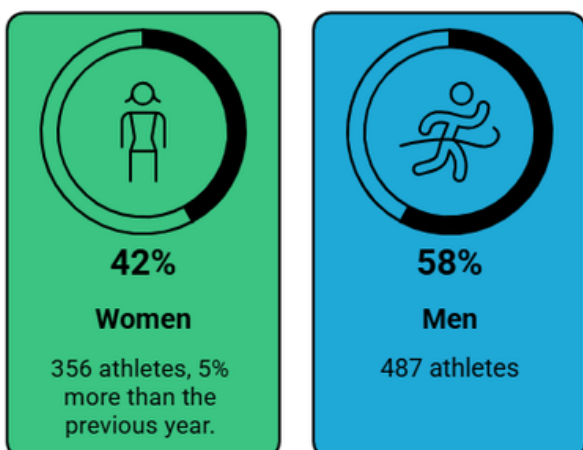
Athletes by Category - Fencing

Category	Number	% / 2024
U9	71	6%
U11	149	-1%
U13	74	-4%
U15	90	3%
U17	92	21%
Junior	88	-4%
Senior	211	-1%
Veterans	68	17%
Total	843	

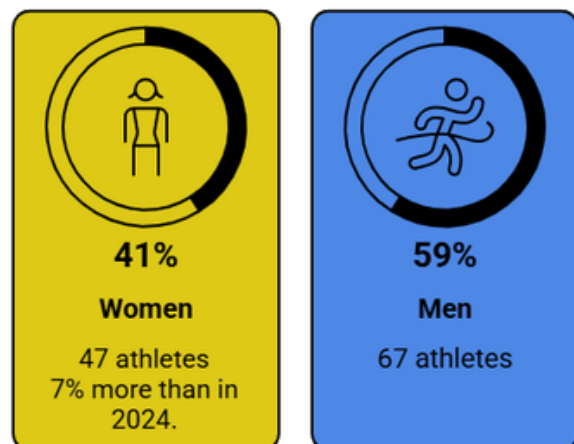
Total Athletes by Gender



Fencing Athletes



Para fencing athletes



Sports Results

Fencing

The year 2025 marked the beginning of the Olympic cycle leading to Los Angeles 2028. Traditionally, the first year of the cycle features a lower volume of competition for top athletes, who adjust their planning with a long-term perspective. Even so, Brazilian fencing maintained a strong level of performance, securing relevant results for the qualification race and consolidating its presence on the continental stage.

Brazil participated in the South American and Pan American Championships across all categories—pre-cadet, cadet, junior, U23, and senior—reaffirming its regional leadership. At the South American Pre-Cadet, Cadet, and Junior Championships, the country surpassed its previous year’s gold medal tally, achieving 13 golds, 8 silvers, and 13 bronzes, a performance that underscores the strength of its youth categories and the consistency of its development programs.

KEY INTERNATIONAL RESULTS

SOUTH AMERICAN CHAMPIONSHIPS YOUTH AND VETERANS 2025

Epée - Women

- Gold – Maria Valentina Boaventura – U9
- Silver– Lais Palermo – U9
- Bronze – Martinna Dinucci – U9
- Silver– Júlia Canashiro – U11
- Bronze – Manuela Hansen – U11
- Bronze – Maya Schneider – U11
- Gold – Anne Driesen – U13
- Gold – Ekaterina Kholmogorova – Veterano 30
- Bronze – Ekaterina Kholmogorova – Veterano 40
- Gold – Luciana Garofolo – Veterano 50
- Bronze – Oriete Covolan – Veterano 50
- Silver – Oriete Covolan – Veterano 60

Foil Women

- Bronze – Lais Palermo – U9
- Bronze – Maya Schneider – U11
- Gold – Eduarda Nascimento – U13
- Silver – Giulia Santos – U13
- Bronze – Ekaterina Kholmogorova – Veterano 40

Epée Men

- Bronze – José Leal – Veterano 60
- Gold – Luiz Fernando Correa – U9
- Gold – João Pedro Perito – U11
- Silver – Luiz Ricardo Traina – U11
- Bronze – Gabriel Polizer – U11
- Gold – Lorenzo Castello Branco – U13
- Silver – Antonio Cosolim – U13
- Bronze – João Pedro Perito – U13

Foil Men

- Bronze – Lorenzo Packer – U9
- Gold – João Pedro Perito – U11
- Silver– Luiz Ricardo Traina – U11
- Bronze – Gabriel Polizer – U11
- Silver – Francisco Araes – U13
- Silver – Marcos Cardoso – Veterano 30
- Gold – Marcos Cardoso – Veterano 40
- Silver – Marcos Cardoso – Veterano 50
- Bronze – Gustavo Gracioli – Veterano 50
- Bronze – José Leal – Veterano 60

Sports Results

Fencing

SOUTH AMERICAN CHAMPIONSHIPS YOUTH AND VETERANS 2025

Sabre Women

- Prata – Martinna Dinucci – U9
- Prata – Maria Luiza Garofolo – U11
- Bronze – Helena Pires – U11
- Ouro – Ana Luiza Motta – U13
- Prata – Olivia Grahl – U13

Sabre Men

- Bronze – Enrico Buss – U9
- Bronze – Enrico Buss – U11
- Bronze – Arthur Moraes – U11
- Bronze – Lorenzo Castello Branco – U13

SOUTH AMERICAN CHAMPIONSHIPS U23 AND SENIOR 2025

Epée Women

- Gold – Laura Correia – U23
- Bronze – Victoria Vizeu – Senior
- Gold – Brasil – Team

Epée Men

- Bronze – Matheus Brandt – U23
- Bronze – Matheus Brandt – Senior
- Bronze – Brasil – Team

Sabre Women

- Silver – Ana Beatriz Fraga – U23
- Bronze – Camila Vieira – U23
- Bronze – Stella Santos – U23
- Silver – Karina Trois – Senior
- Bronze – Luana Pekelman – Senior
- Prata – Brasil – Equipes

Foil Men

- Silver – Brasil – Team

Sabre Masculino

- Bronze – Erico Patto – U23
- Bronze – Enrico Pezzi – Senior
- Gold – Brasil – Team



Com 35 medalhas, Brasil termina na liderança do Sul-Americano de Esgrima Cadete e Juvenil

PUBLICADO EM 27 DE SETEMBRO DE 2025



Sports Results

Fencing

SOUTH AMERICAN CHAMPIONSHIPS U15, U17 AND JUNIOR 2025

Epée Women

- Bronze – Yasmin Barros – U15
- Bronze – Sophia Asquino – U15
- Gold – Laura Correia – Junior
- Silver – Pietra Brazolin – Junior
- Gold– Brasil – Teams

Foil Women

- Bronze – Eduarda Nascimento – U15
- Bronze – Sophia Asquino – U15
- Prata – Valentina Basso – U17
- Prata – Valentina Basso – Junior
- Prata – Brasil – Teams

Sabre Women

- Gold – Stella Santos – U15
- Bronze – Julia Improta – U15
- Gold – Ana Beatriz Fraga – Junior
- Prata – Gabriela Ohana – Junior
- Bronze – Julia Improta – Junior
- Gold– Brasil – Teams

Epée Men

- Gold– Pedro Louzada – U15
- Prata – Guilherme Goivinho – U15
- Gold– Guilherme Dubiel – U17
- Bronze – Pedro Louzada – U17
- Bronze – Pedro Louzada – Junior
- Bronze – Brasil – Teams

Foil Men

- Gold– Álvaro Kalleby – U15
- Prata – Antonio Teixeira – U15
- Bronze – Felipe Reichow – U15
- Prata – Luiz Foschini – U17
- Bronze – Álvaro Kalleby – U17
- Bronze – Fernando Melian – U17
- Gold – Brasil – Teams

Sabre Men

- Gold – Marcus Pinto – U15
- Gold– Marcus Pinto – U17
- Bronze – Joaquim Peluso – U17
- Gold – Marcus Pinto – Junior
- Gold – Brasil – Teams

PAN-AMERICAN CHAMPIONSHIPS U17 AND JUNIOR 2025

- Bronze – Pietra Brazolin – Epée Women U17
- Bronze – Livia Burberry – Foil Women U17
- Gold – Arthur Wolff – Sabre Men U17
- Bronze – Alexandre Camargo – Epée Men
- Bronze – Isabela Carvalho – Sabre Women
- Bronze – Brasil – Foil Women Teams

SATELLITE TOURNAMENT

- Bronze – Guilherme Toldo – Foi Men
- Bronze – Lorenzo Mion – Foil Men
- Gold – Ana Beatriz Bulcão – Foil Women

GYMNASIADÉ

- Gold – Pedro Louzada – Epée Men
- Prata – Álvaro Kalleby – Foil Men



Sporting Results – Para fencing

On the international stage, Brazil demonstrated technical and competitive progress. The World Cup stage held in Brazil resulted in podium finishes across different weapons and categories, while the World Championships delivered significant placements and greater consistency among the country's top athletes on the circuit. At the World Cup in Thailand, Brazil once again achieved strong results, further reinforcing its presence on the global stage.

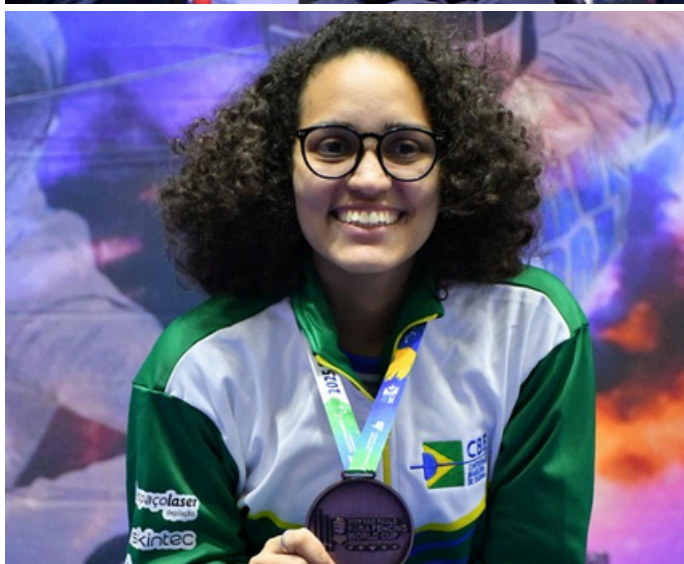
INTERNATIONAL RESULTS 2025

Para Fencing World Cup Brazil

- Bronze - Jovane Guissone - Epée Men B
- Bronze - Jovane Guissone - Sabre Men B
- Bronze - Jovane Guissone - Espada Men B
- Bronze - Rayssa Veras - Sabre Women A
- Bronze - Rayssa Veras - Epée Women A

World Cup - Thailand

- Bronze - Jovane Guissone - Foil Men B



2025 Standouts

In 2025, the Brazilian Fencing Confederation maintained its commitment to recognizing and valuing the key contributors to the sport in the country. As in previous years, CBE honored athletes who stood out in their respective weapons and categories, recognizing those who finished the season at the top of the National Ranking, as well as Brazilian athletes with the best placements in the international rankings of the FIE and WAS. This recognition reinforces sporting merit and celebrates the achievements of those representing Brazil at the highest levels of international fencing.

In addition to athletes, CBE also honored the top-rated referees in each weapon, based on evaluations by athletes, coaches, and the Refereeing Commission. This award highlights the essential role of officiating in ensuring both the technical development and the integrity of national competitions.

The Sporting Practice Entity (EPD) with the highest number of award recipients received a distinction medal, reaffirming the excellence of its work throughout the season. As part of this recognition, the winning EPD also nominated the Coach of the Year, who was honored by CBE for their direct contribution to the development and performance of the awarded athletes.

These distinctions reflect the collective efforts of athletes, coaches, referees, and institutions who, together, strengthen Brazilian fencing and drive its growth at both national and international levels.



Guilherme Toldo
General Standout and
Adult Male Foil

Jovane Guissone
Overall Standout and
Épée and Foil B

Lorana Schwantes
Standout Referee
Épée

Bia Bulcão
Overall Standout and
Adult Women's Foil

Rayssa Veras
General Highlight and
Épée and Sabre A

Gabriel Vasques
Standout Referee
Foil and Sabre

2025 Standouts

NAME	WEAPON	CATEGORY	CLUB
ALVARO KALLEBY	FM	U15	CAP
AMERICO SANTOS	SM	V50	CAP
ANA CLARA FERREIRA	EF	U15	AMK
ANA FRAGA	SF	U17 / U20	ECP
ANA LUIZA MOTTA	SF	U13	CAP
ANNE DRIESEN	EF	U13	ECP
BIA BULCAO	FF	Senior / Overall	ECP
ERICO PATTO	SM	U20	ECP
FABIANA TEIXEIRA	EF	V40 /V50	AMK
GABRIEL POLIZER	EM	U11	CMSP
GIORGIO FUMAGALLI	FM	U20	GNU
GIULIA SANTOS	FF	U13 / U15	ECP
GUILHERME DUBIEL	EM	U17	DEC
GUILHERME TOLDO	FM	Senior / Overall	GNU
HENRIQUE GARRIGOS	SM	Senior	CAP
HENRIQUE LOPES	SM EM	U9 /U11 U9	IF
JOAO PEDRO PERITO	FM	U11	CMSP
JOSE LEAL	FM	V60	CC



Standouts 2025

NAME	WEAPON	CATEGORY	CLUB
KARINA TROIS	SF	Senior	CAP
KOITI YAMASHITA	EM	V50	EEAM
LAIS PALERMO	EF	U9	BE
LAIS TOSTA	SF	U15	BE
LAURA CORREIA	EF	Senior/ U20	CAP
LAURA ZHENG	FF	U9	ECP
LORENZO CASTELLO BRANCO	EM / SM	U13	CMSP
LUIS GUILHERME GARCIA	EM	V40	CAP
LUIZ FOSCHINI	FM	U17	ECP
LUIZA MARTINEZ	FF	U11	CAP
MAICON PEREIRA	FM	V40	EMP
MANUELA HANSEN	SF	U11	AMK
MARCELO MORAIS	FM	V50	GNU
MARCUS PINTO	SM	U15 / U17	GNU
MARIA GAROFOLO	EF	U11	CMSP
MARTINNA DINUCCI	SF	U9	ECP
MATHEUS BRANDT	EM	U20	ECP
OLEGARIO VASCONCELOS	SM	V60	APE



Standouts 2025

NAME	WEAPON	CATEGORY	CLUB
PATRICIA DI CUNTO	EF / SF	V60	CAP
PATRICIA SAUAN	SF	V40 / V50	ECP
PEDRO FONSECA	FM	U9	CAP
PEDRO LOUZADA	EM	U15	CAP
PEDRO PETRICH	EM	Adulto	AMK
PIETRA BRAZOLIN	EF	U17	ECP
ROBINSON OLIVEIRA	EM	V60	AMK
RODRIGO BALDIN	SM	V40	BE
SILVIA ROTHFELD	FF	V40 / V50	CAP
THEO KADUNC	FM	U13	ECP
VALENTINA BASSO	FF	U17 / U20	ECP
VANIA OLIVEIRA	FF	V60	CMSP



PARA FENCING

NAME	WEAPON	CATEGORY	CLUB
FABIANA SOARES	FF	A	SCM
IZAIAS MONTEIRO	SM	B	ADFP
JOVANE GUISSONE	EM / FM	B	CAP
KEVIN DAMASCENO	FM / SM	A	GNU
MOACIR RIBEIRO	EM	A	ADFP
MONICA SANTOS	EF / FF / SF	A	GNU
RAYSSA VERAS	EF / SF	A	CAP



Brazilian Fencing Institute










In 2025, the Brazilian Fencing Institute (IBE) continued its commitment to the qualification of human resources, expanding access to technical education across different regions of the country. Throughout the year, Level I Coaching Courses were held in seven cities—Brasília (DF), Rio de Janeiro (RJ), Lins (SP), Fortaleza (CE), Porto Alegre (RS), Curitiba (PR), and Jaraguá do Sul (SC)—reaching the Central-West, Southeast, South, and Northeast regions, and reinforcing the decentralization of training opportunities.

Educational Initiatives

These initiatives resulted in the certification of 87 new coaches, including 26 women and 61 men, all completing the Level I introductory training. This progress represents an important step toward expanding the sport's technical base, strengthening clubs, schools, social projects, and training centers throughout the country. Female participation, in particular, reflects significant progress in the inclusion of women in technical roles, contributing to greater diversity and balance within the structure of Brazilian fencing.

The geographic distribution of the courses highlights IBE's advancement in democratizing sports education and in consolidating a nationwide network of qualified professionals. The set of initiatives carried out in 2025 confirms the Institute's strategic role in the sustainable development of the sport, increasing the number of coaches prepared to support grassroots development and promote fencing in diverse contexts.

City	Men	Women	Total
 Lins	7	6	13
 Brasília	2	1	3
 Fortaleza	12	7	19
 Jaraguá do Sul	4	1	5
 Curitiba	11	4	15
 Porto Alegre	3	1	4
 Rio de Janeiro	22	6	28

Brazilian Fencing Institute



In 2025, the Brazilian Fencing Confederation (CBE) advanced strategic initiatives aimed at professional qualification and the technical strengthening of the sport. Among the key actions, the Specialized Training Grant Program was implemented—an unprecedented initiative designed to expand the training of professionals in technical areas of fencing. Four beneficiaries were awarded, totaling R\$ 54,000.00 in investments.

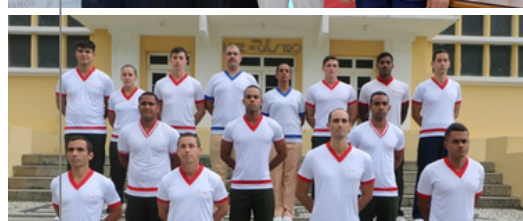
Selected Professionals:

- Maître d'Armes Course – EsEFEx (Rio de Janeiro, Brazil): Luciano Rossato; Janaína Araújo
- Maître d'Armes Course – Spanish Fencing Federation (Madrid, Spain): Bernardo Schwuchow; Marco Xavier

The Brazilian Fencing Institute (IBE) also played a direct role in technical qualification, providing pedagogical support to the EsEFEx Maître d'Armes Course through specialized content, such as the Equipment Regulations Class delivered by Rodrigo Fontes (IBE Coordinator), and the National Refereeing Course conducted by Juan Liendo (General Sports Manager).

Complementing these initiatives, CBE participated in the Pan-American International Fencing Coaches Course – Sabre, held in Peru, with the participation of coach Ícaro Zagrobelny. The program, organized by the Pan American Sports Organization (ODEPA), brought together coaches from across the Americas in an environment focused on technical development and professional exchange, reinforcing the Confederation's commitment to excellence and alignment with international best practices.

These initiatives reinforce the role of CBE and IBE in developing highly qualified professionals, expanding national technical capacity, and contributing to the sustainable growth of Brazilian fencing.



Brazilian Fencing Institute



In 2025, **CBE Talks**—under the theme Women’s Movement in Sport—was part of the Brazilian Fencing Confederation’s Engagement Program aimed at strengthening female participation in the sport. Held on October 15–16 during the Cadet and Junior Brazilian Championships in Porto Alegre (RS), the event was led by Ana Beatriz Di Rienzo Bulcão, an Olympic athlete and sports mentor.



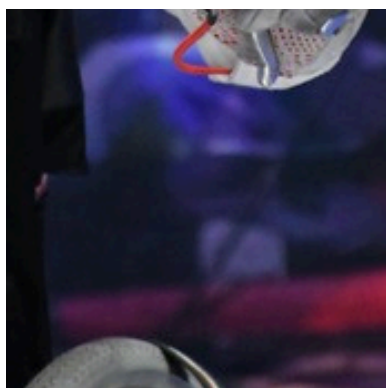
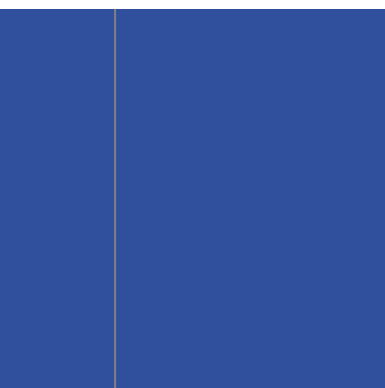
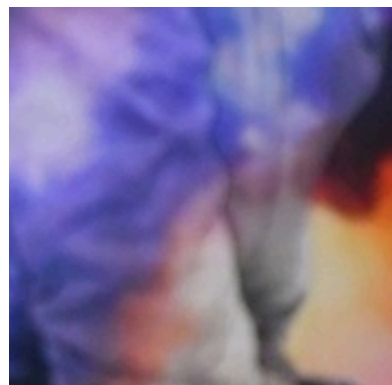
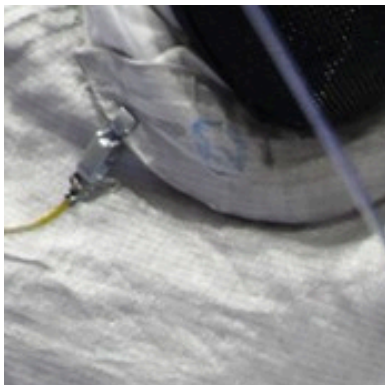
Designed for female athletes aged 15 to 20, CBE Talks promoted dialogue, the exchange of experiences, and both personal and athletic development, providing a safe space for reflection, self-awareness, and confidence building. The initiative reinforced CBE’s commitment to advancing women’s participation in fencing and to fostering new leadership both on and off the piste.





In 2025, the **Engajar Project**, developed by the Brazilian Fencing Confederation (CBE) through the Brazilian Fencing Institute (IBE), advanced its mission to foster the sustainable growth of the sport in the country. The initiative seeks to connect companies, institutions, and qualified professionals, expanding the availability of fencing in new markets and strengthening regional projects in their consolidation phase.

In this context, the project directly supported the development of fencing in the state of Espírito Santo by strengthening the initiatives led by the Enzo Pegorette Institute (IEP), a pioneer in introducing the sport in the region. CBE’s support included the provision of essential equipment—such as épées, gloves, masks, and protective gear—ensuring improved conditions for practice, safety, and technical development for both students and coaches. The initiative also received coverage in regional media, highlighting IEP’s role in establishing the first fencing team in Espírito Santo.

The Engajar Project reaffirms CBE’s commitment to the nationwide expansion of the sport, supporting initiatives that promote inclusion, athletic development, and the emergence of new talent, contributing to the sustainable growth of Brazilian fencing.



 +55 21 3289-0568

 Rua da Assembleia 10, Sala 3212 - Centro - Rio de Janeiro - RJ

 www.cbesgrima.org.br

 contato@cbesgrima.org.br